





## Cleaning Chemical

Everyday dosing systems fail to provide a closed secure container dispensing arrangement to safeguard against unrestricted methods of use.

**floloc®** solves this problem

### Patented

Aperture® Irremovable Dispensing Closure secures and controls the use of chemicals, preventing misuse, pilferage, contamination and waste as well as **Reducing Cost**

**floloc**



### Control

The system ensures managed use of the Bio Degradable / EN Certified formulations, for the Professional Cleaning, Food Service and Healthcare environments.



## OPTIX Dispensing

---

Based on the principle of optic measurement

Simply push and fill.

Plumbed system simultaneously mixes the chemical and water to give the required dilution.

Accurate dilution

No Repeat dosing.

Reduces time spent waiting to fill bottles.

4 in 1 Select Dispensing (New)

Innovative Quad Diverter Valve system ensures no product cross contamination

Durable - Sleek - Design.

# Incorporating



Irremovable  
Dispensing Closure

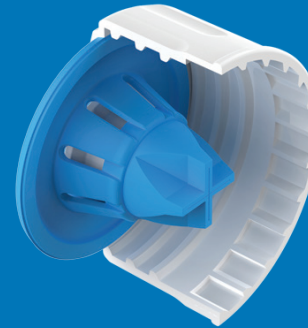
[www.sanserv.com](http://www.sanserv.com)  
[www.apertureclosures.com](http://www.apertureclosures.com)

## Prevents:

- Misuse
- Pilferage
- Contamination
- Waste



**Reduces**  
Packaging  
Consumption



The unique one-way valve and pre-use transportation seal safeguards chemical contents within the container, ensuring controlled use as well reducing the packaging usage associated with open bottles and containers.

# Chemical Concentrates

---

6 floloc™ concentrates available

Bio degradable and phosphate free

Excellent product performance

Formulations reduce the amount of chemicals required

EN certified sanitizers and disinfectants for food preparation and healthcare applications.

EN 1276, EN 13697, EN 13727 (MRSA, VRE, ESBL).

120 dilutions per 2l concentrate

Secure container design, reduces space and storage.

Colour coded user safety data with bespoke wall charts provided with every dilution system installed.

Case Size: 4 x 2l





